

**KDCWL/S8**  
**COMBINATION pH GLASS BODIED K-SERIES ELECTRODE WITH 13.5pg THREADED CAP**

**Applications:**

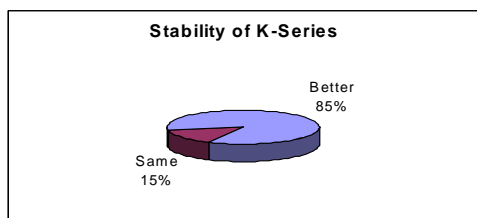
Online large vessel monitoring.  
 Pharmaceuticals.  
 Water: Acid rain, drinking, potable, river water, sea water.  
 Waste: Effluent, viscous/precipitate containing solutions.  
 Food samples: Soup, Yogurt, Milk, Cheese, Flavourings.

**Features:**

Unique patented use polymer gel "double junction" reference system.  
 Faster response, better stability and better reproducibility, in both buffers and samples.  
 Sealed bou offers lower maintenance.

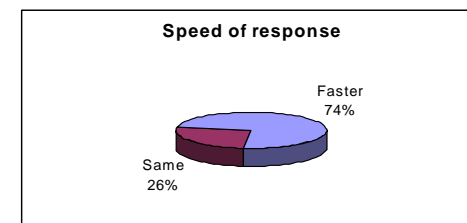
<b>pH Range</b>	0-14	<b>Temperature Range/°C</b>	0-40
<b>Slope</b>	95 to 102%	<b>Reproducibility</b>	<0.01 pH
<b>Pressure Range</b>	Up to 3 Bar	<b>Electrode Resistance</b>	100 – 500 MΩ
<b>Long term stability (drift) 20°C in 4.00 Buffer</b>	<0.01 pH/Hr	<b>Eo</b>	-20 to +20 mV
<b>Response Time *</b>	<20 sec		

\*= (max. time for a selectable pH step between 2-12 (95% of step))



**K-Series customers surveyed**

<b>Thread size</b>	13.5pg	<b>Refillable</b>	No
<b>Cable Length</b>	N/A	<b>Connector type</b>	S8
<b>Storage solution</b>	S00K/	<b>Body Material</b>	Glass
<b>Reference Type</b>	Patented use KD reference	<b>Shelf Life</b>	12 Months



**K-Series customers surveyed**

**K-User Comments:**

"Readings are far more stable and we are extremely confident when using this electrode that the readings are correct."  
 "Far more accurate in our samples. The reading is also very stable. It's accuracy is far superior and the time taken for a stable reading to appear is far less than before." "Faster response means better control of the reaction which gives us a higher yield". "Lifetime of electrode is much longer and performance far better than previous type."

**Thermo Electron** Station Road, Auchtermuchty, Fife, UK KY14 7DP  
 Tel: +44 (0)1337 828871 Fax: +44 (0)1337 828972  
 E-mail: [sales.water.uk@thermo.com](mailto:sales.water.uk@thermo.com) Website: <http://www.thermo.com>