

SW711
pH SENSING HALF CELL, GLASS BODIED

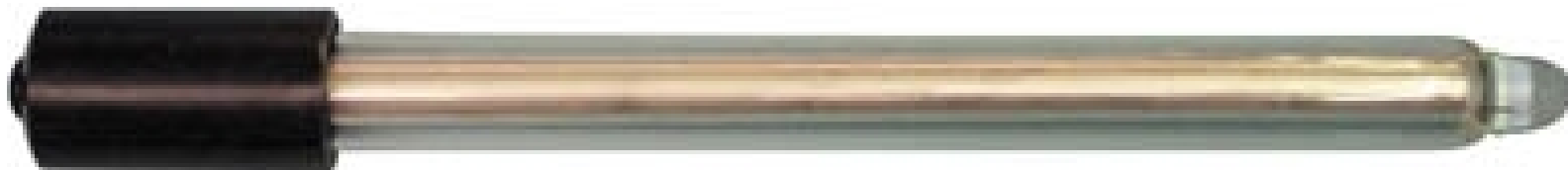
Applications: Best for research measurements in conjunction with calomel reference

Features: Low maintenance sealed unit.
 Fully screened to reduce noise
 Robust glass bulb

The following specifications are obtained when the electrode is used in conjunction with a calomel reference electrode.

pH Range	0-14	Temp' Range/°C	0-100 (Tip only)
Slope	95 TO 102%	Reproducibility	<0.03 pH
Pressure Range	Up to 6 Bar	Electrode Resistance	100 – 500 MΩ
Long term stability (drift) 20°C in 4.00 Buffer	<0.03pH/Hr	Eo	-30 TO +30 mV
Response Time	<30 sec	Temperature Compensation	None

(max. time for a selectable pH step between 2-12 (95% of step))



Waterproof	NO	Sensor	pH bulb
Dimensions below cap	120 x 12mm	Refillable	No
Cable length	1M	Cable termination	BNC plug
Storage solution	S00V/	Body material	Glass
Reference type	N/A	Shelf life	12 months

The SW711 is a sealed robust, low maintenance glass bodied pH sensing electrode. When used with a calomel reference, pH readings can be obtained in difficult to measure applications and research situations. Suitable for use in soils, high temperature samples and emulsions.

Thermo Electron Station Road, Auchtermuchty, Fife, UK KY14 7DP
 Tel: +44 (0)1337 828871 Fax: +44 (0)1337 828972
 E-mail: sales.water.uk@thermo.com Website: <http://www.thermo.com>